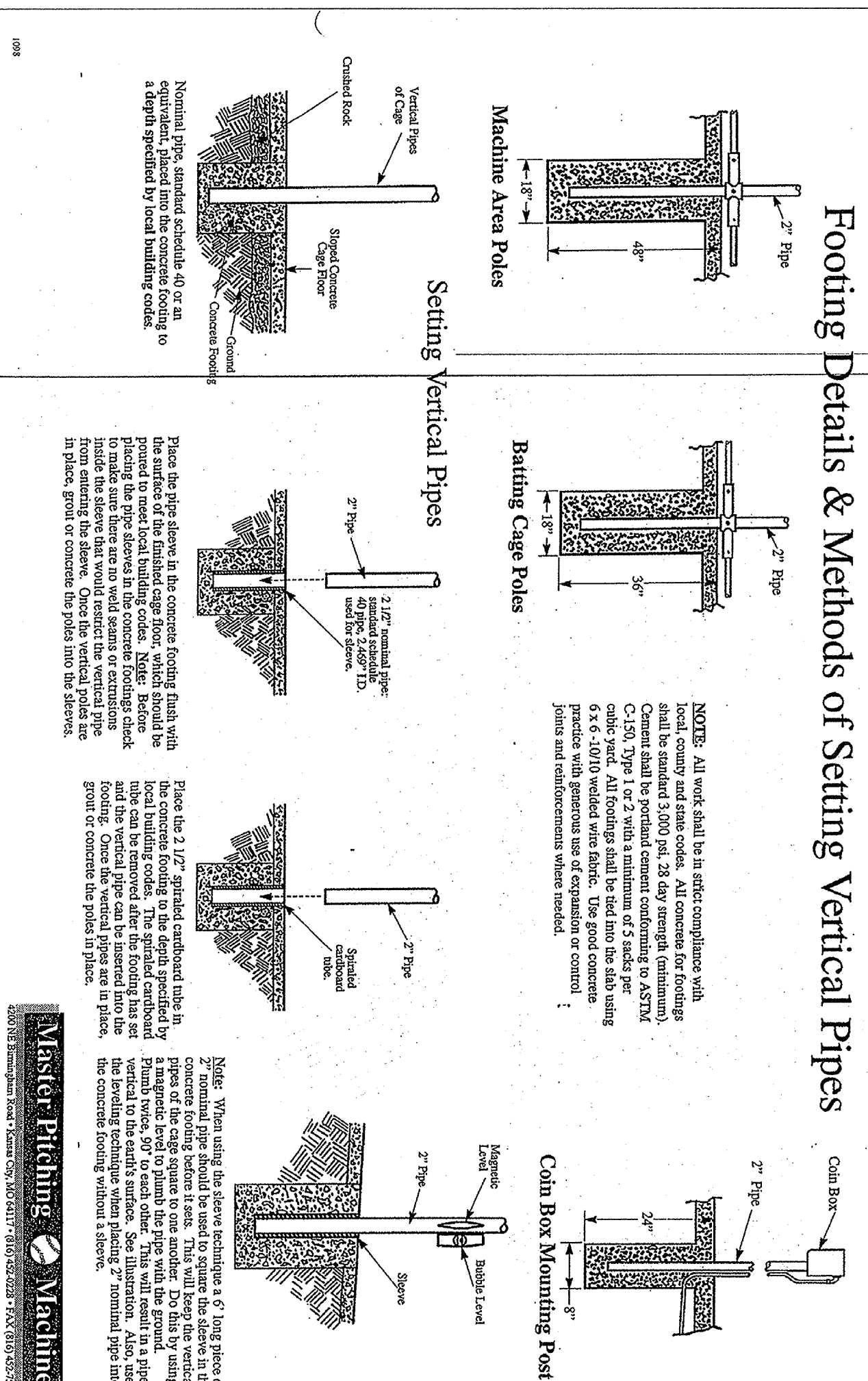


BATTING CAGE DETAILS

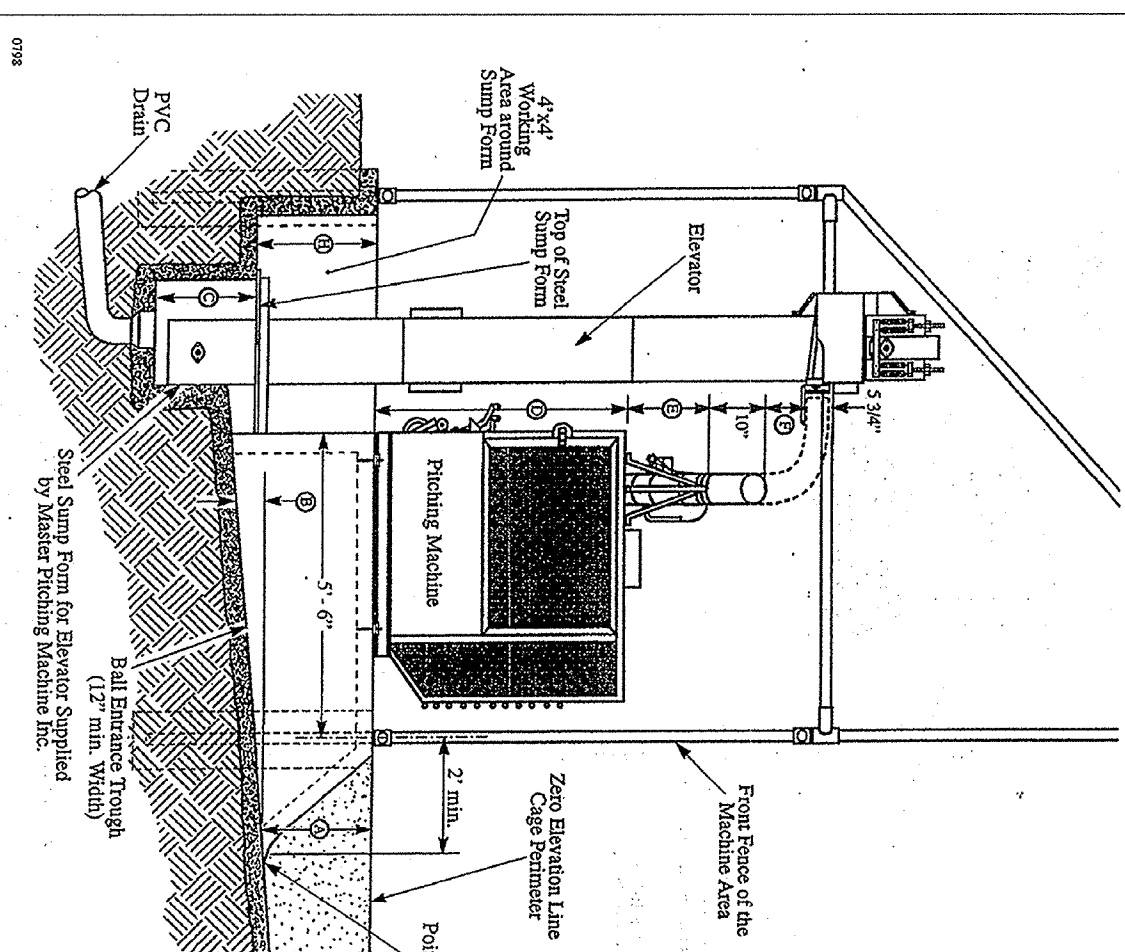
Footings Details & Methods of Setting Vertical Pipes



Master Pitching Machine

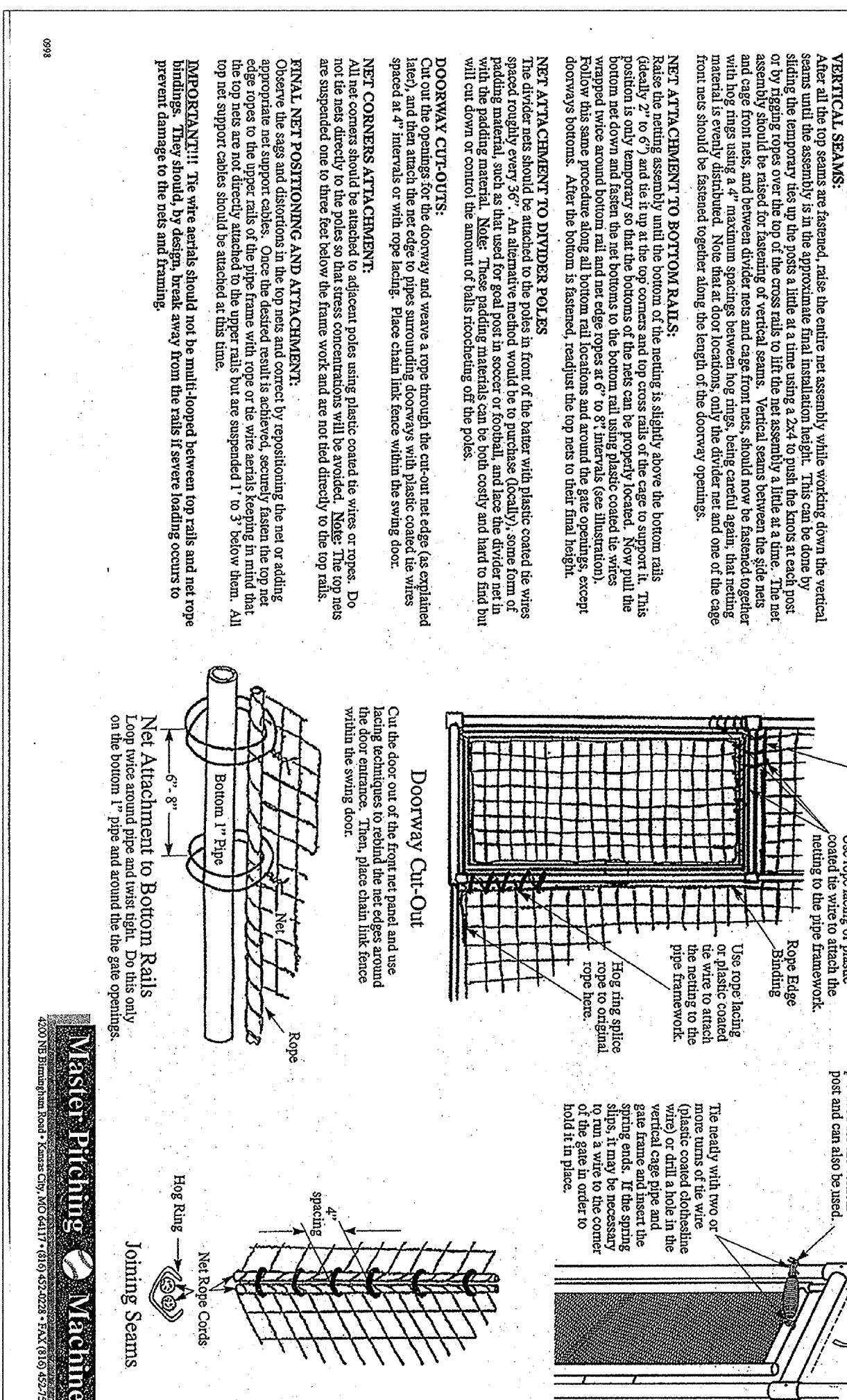
EW Elevator Specifications and Sizes

Number of Cages	1	2	3	4	5	6	7	8	9	10	11	12
A. Stages	18'	20'	22'	24'	26'	28'	30'	32'	34'	36'	38'	40'
B. Stage	8'	8'	8'	8'	8'	8'	8'	8'	8'	8'	8'	8'
C. Stage Height	20'	20'	20'	20'	20'	20'	20'	20'	20'	20'	20'	20'
D. Total Height	18'	20'	22'	24'	26'	28'	30'	32'	34'	36'	38'	40'
E. Netting Height	12'	14'	16'	18'	20'	22'	24'	26'	28'	30'	32'	34'
F. Netting Height	12'	14'	16'	18'	20'	22'	24'	26'	28'	30'	32'	34'
G. Netting Height	12'	14'	16'	18'	20'	22'	24'	26'	28'	30'	32'	34'
H. Netting Height	12'	14'	16'	18'	20'	22'	24'	26'	28'	30'	32'	34'
I. Netting Height	12'	14'	16'	18'	20'	22'	24'	26'	28'	30'	32'	34'
J. Netting Height	12'	14'	16'	18'	20'	22'	24'	26'	28'	30'	32'	34'



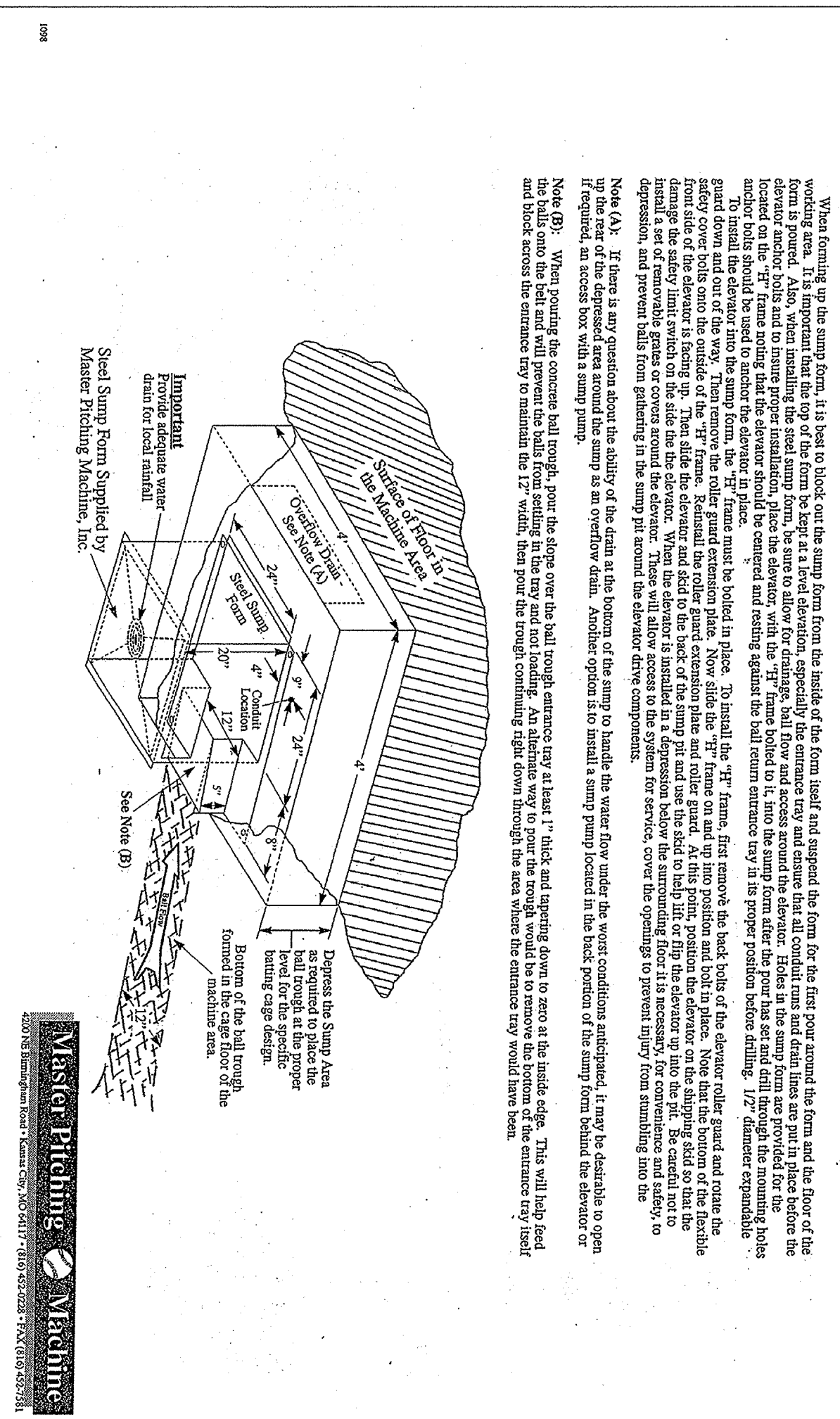
Master Pitching Machine

Netting Installation Instructions



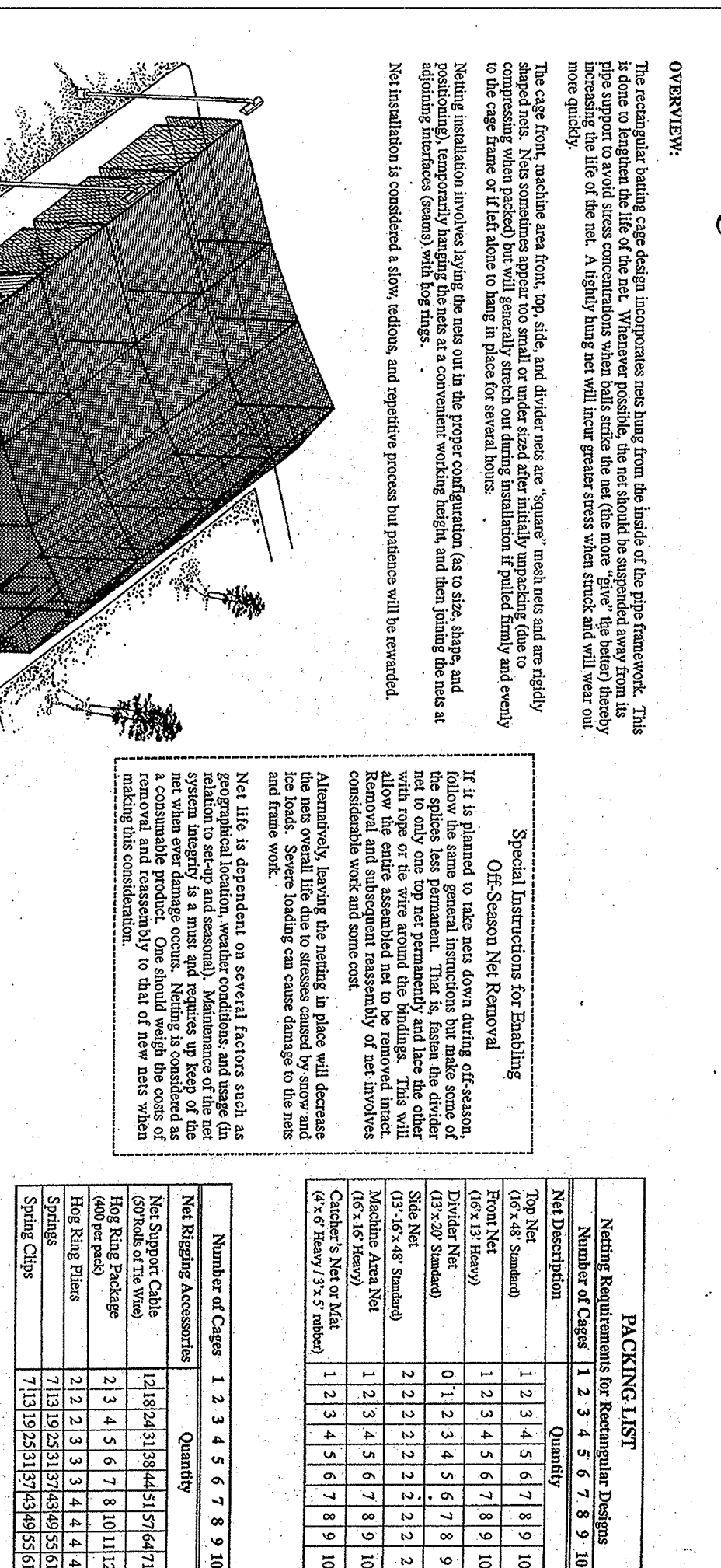
Master Pitching Machine

Elevator Ball Sump Installation



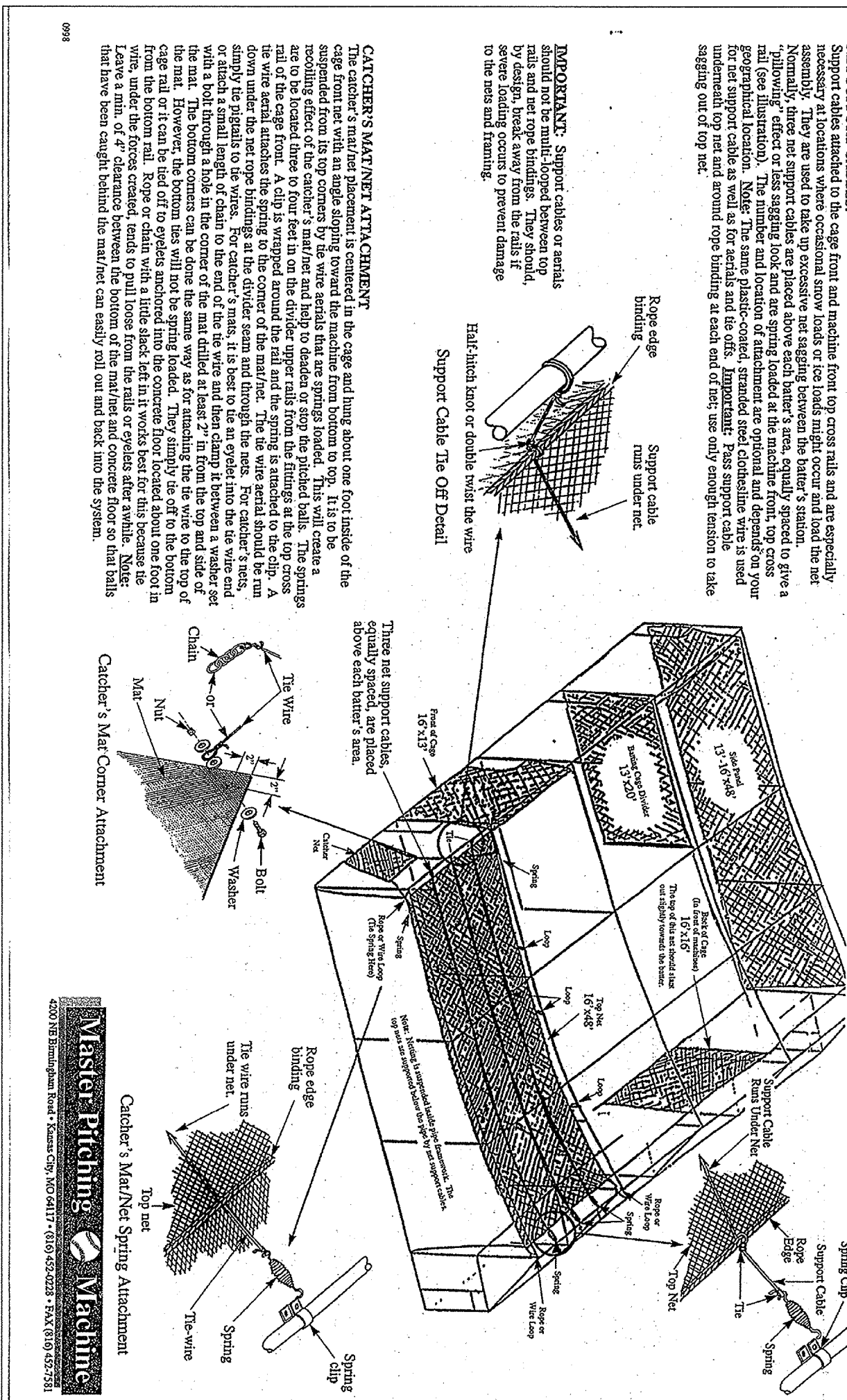
Master Pitching Machine

Netting Installation Instructions



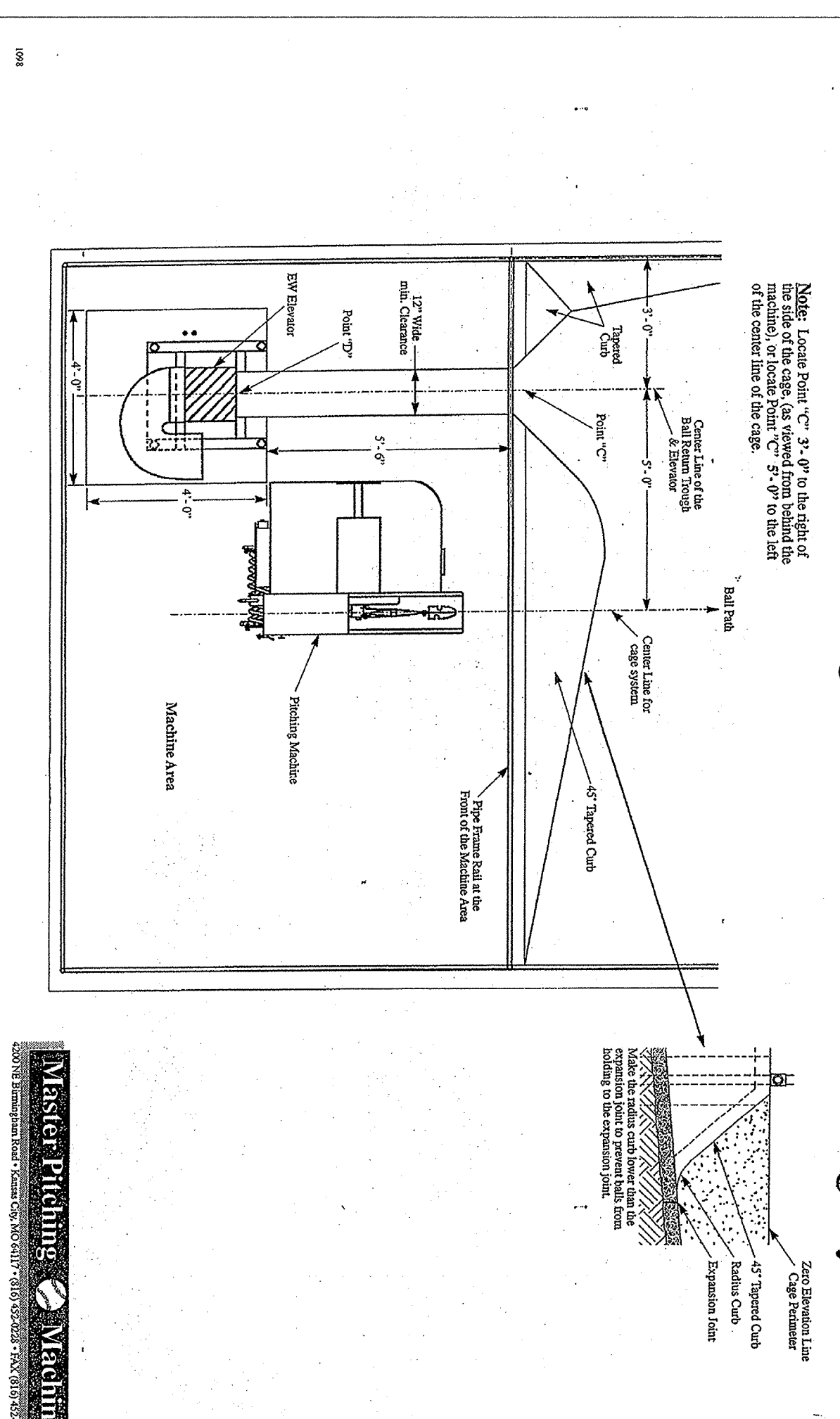
Master Pitching Machine

Netting Installation Instructions



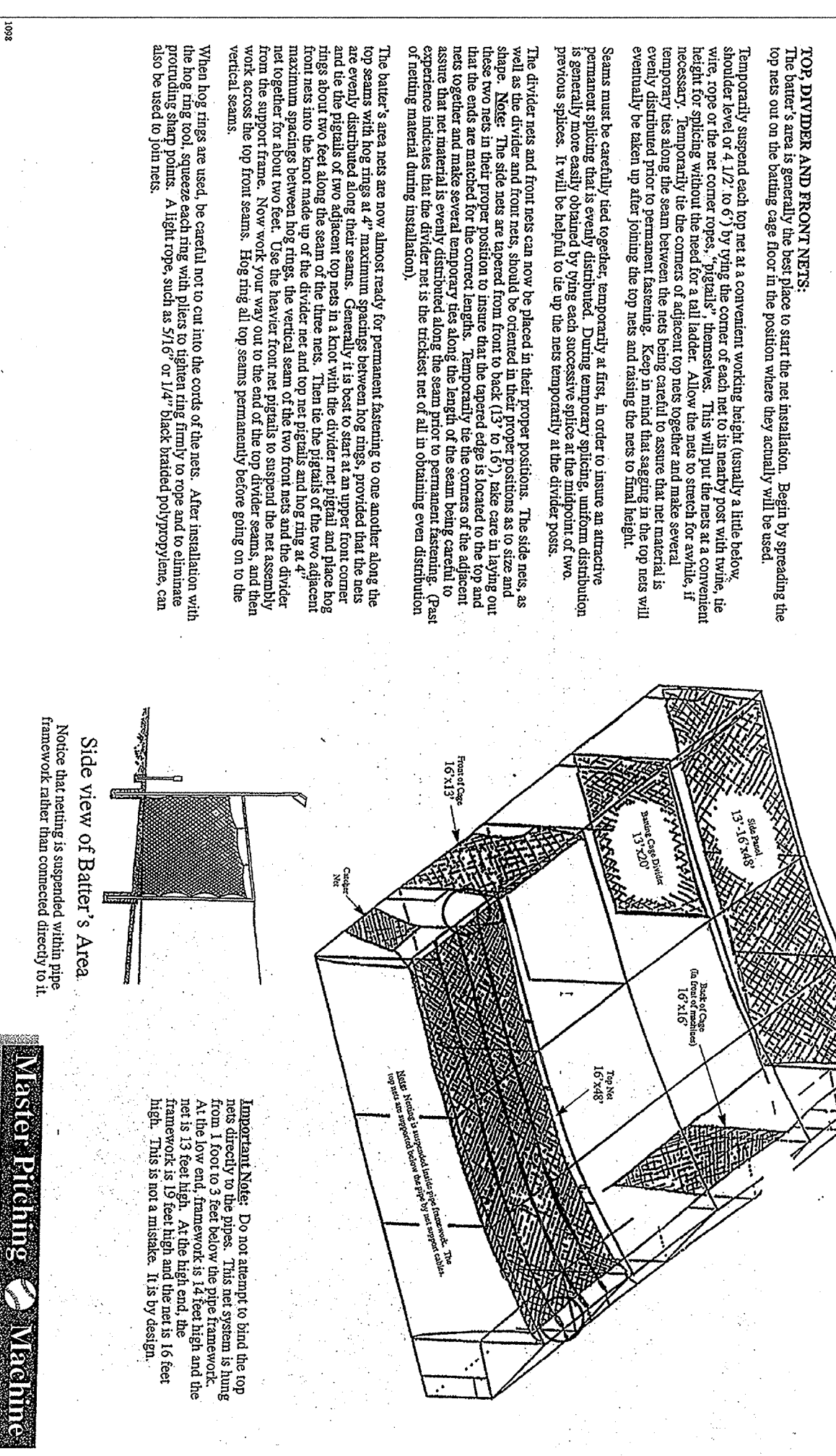
Master Pitching Machine

Elevator and Ball Return Trough Location for 16' Wide Cage Systems



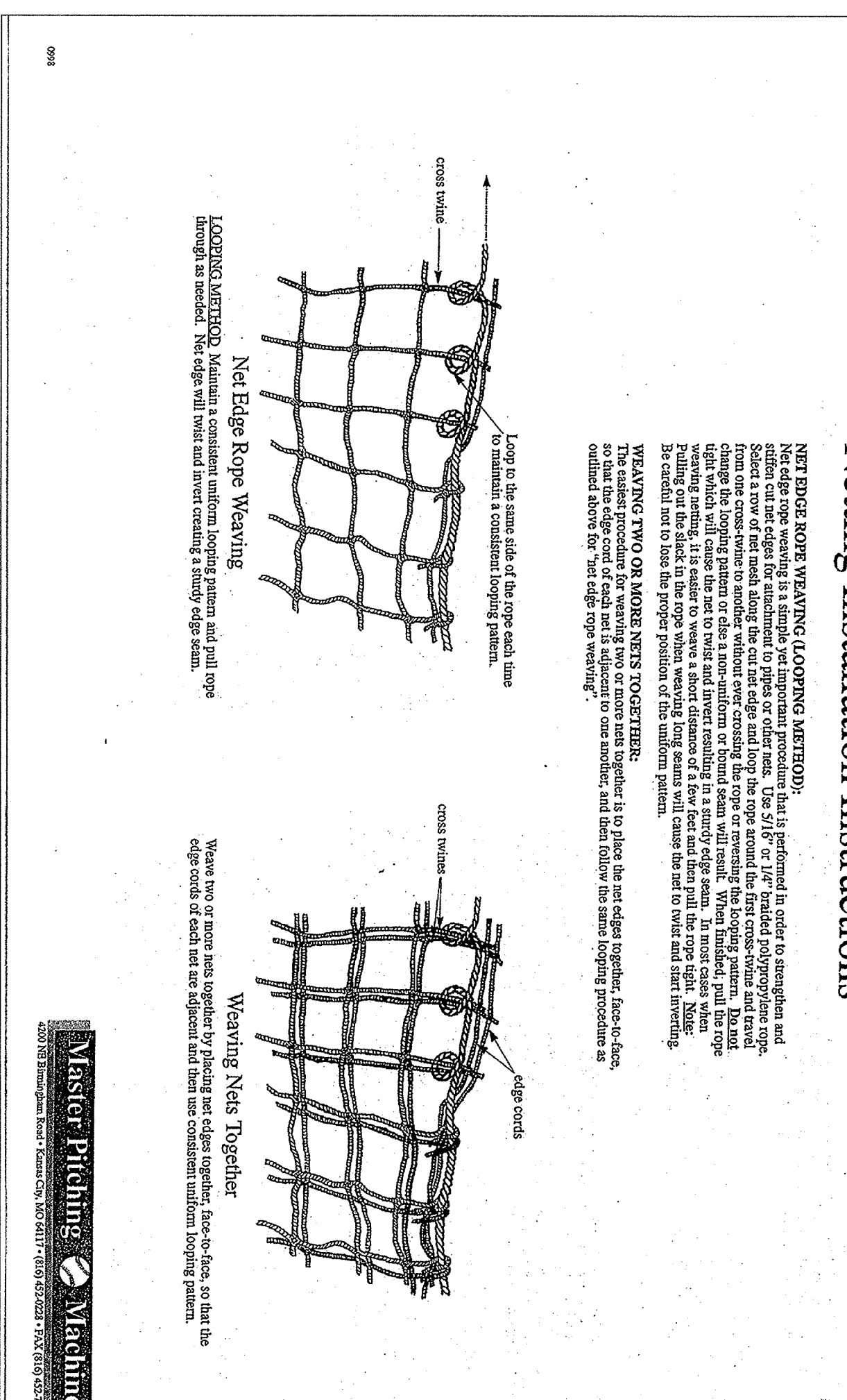
Master Pitching Machine

Netting Installation Instructions



Master Pitching Machine

Netting Installation Instructions



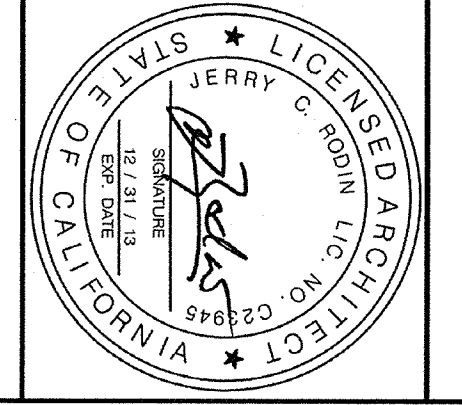
Master Pitching Machine

REVISIONS				REVISIONS			
NO.	DATE	ITEM	BY	NO.	DATE	ITEM	BY
1	12-04	LAST DISTRIBUTION CITY LAYOUT REVIEW	JCR	1	12-09	MARK REVISIONS	JCR
2	02-09	REC # MARKS REVIEW	JCR	2	02-09	MARK REVISIONS	JCR
3	02-09	BD # PLAN CHECK	JCR	3	02-09	MARK REVISIONS	JCR
4	02-09	REC # MARKS REVIEW	JCR	4	02-09	MARK REVISIONS	JCR

Rodin Associates
 Jerry C. Rodin, Architect, A.I.A.
 29000 S. WESTERN AVENUE, SUITE 408
 RANCHO PALOS VERDES, CA 90275
 OFFICE: (310) 832-3135
 FAX: (310) 832-0333
 E-MAIL: jrodin@sbcglobal.net

DANIEL'S FIELD SKATE PARK & SPORTS CENTER DESIGN FOR:
THE CITY OF LOS ANGELES DEPARTMENT OF RECREATION AND PARKS
BOYS & GIRLS CLUB OF SAN PEDRO
 MIKE LANGING, EXECUTIVE DIRECTOR
 1200 S. CABRILLO AVENUE SAN PEDRO, CA 90731
 (310) 833-0807 OFFICE (310) 833-4253 FAX
 845 W. 12th STREET, SAN PEDRO, CA 90731
 SITE

BATTING CAGE SPECIFICATIONS AND DETAILS

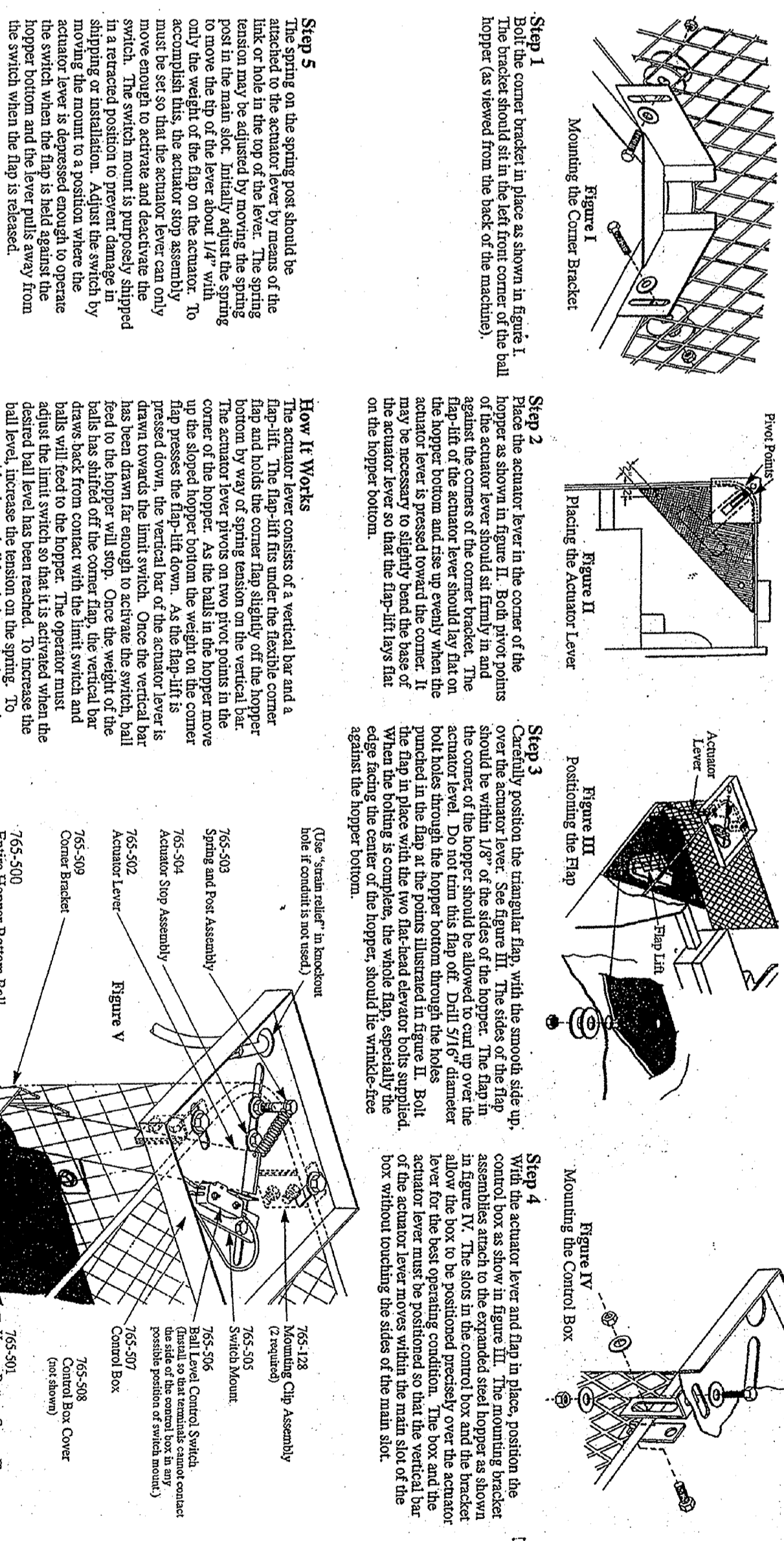


SEP 23 2012
 A-6
 RA-2002-005

JERRY C. RODIN, ARCHITECT, A.I.A., ESSENTIAL, RESERVE THEIR COPYRIGHT AND OTHER PROPERTY RIGHTS IN THEIR PLANS, THESE PLANS ARE NOT TO BE REPRODUCED, COPIED, OR COMPILED IN ANY FORM OR MANNER WITHOUT THE WRITTEN PERMISSION AND CONSENT OF RODIN ASSOCIATES, JERRY C. RODIN, ARCHITECT, A.I.A. SMALL, BE FIELD OFFICE

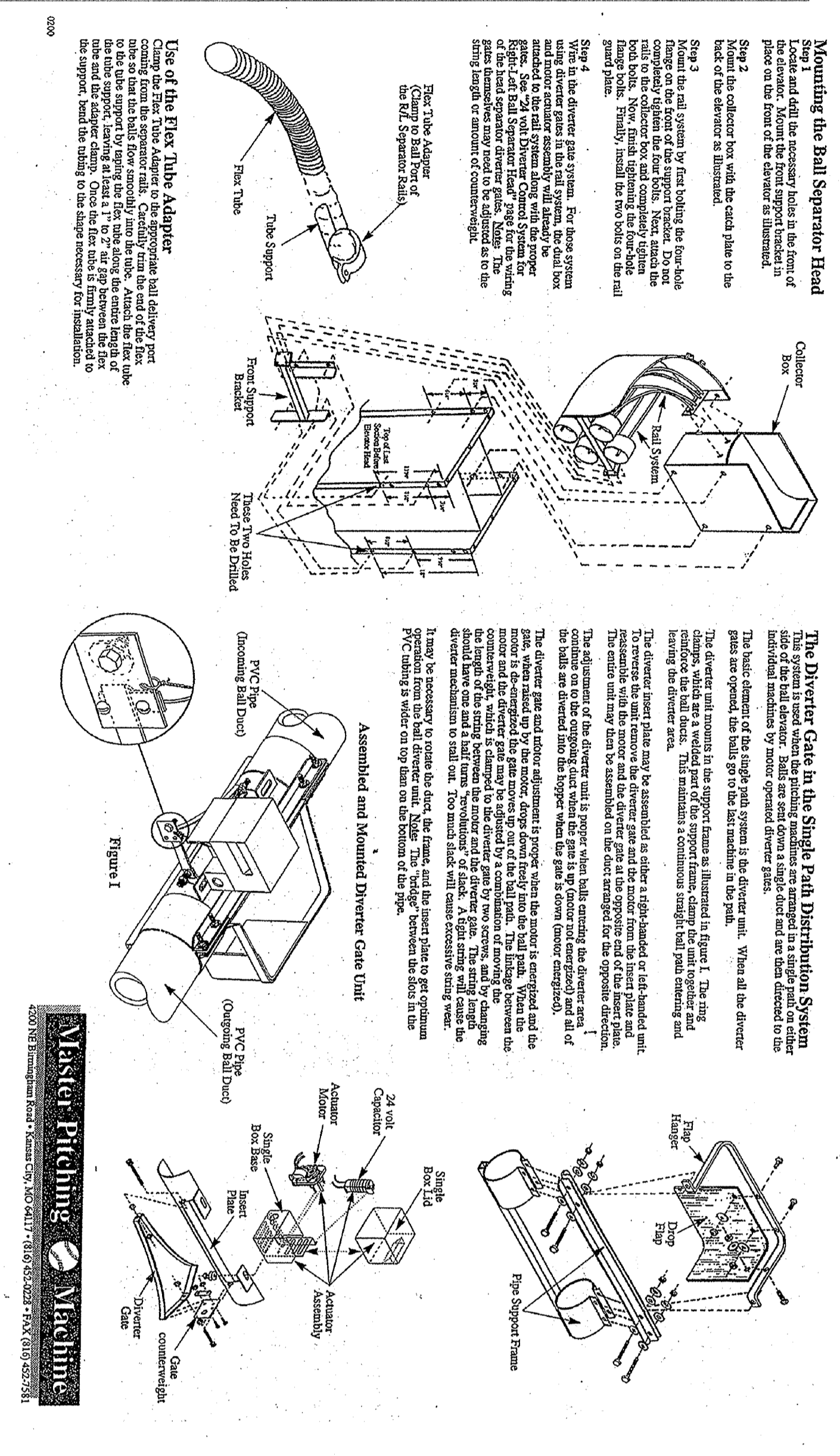
BATTING CAGE DETAILS

The Hopper Bottom Ball Level Control Installation



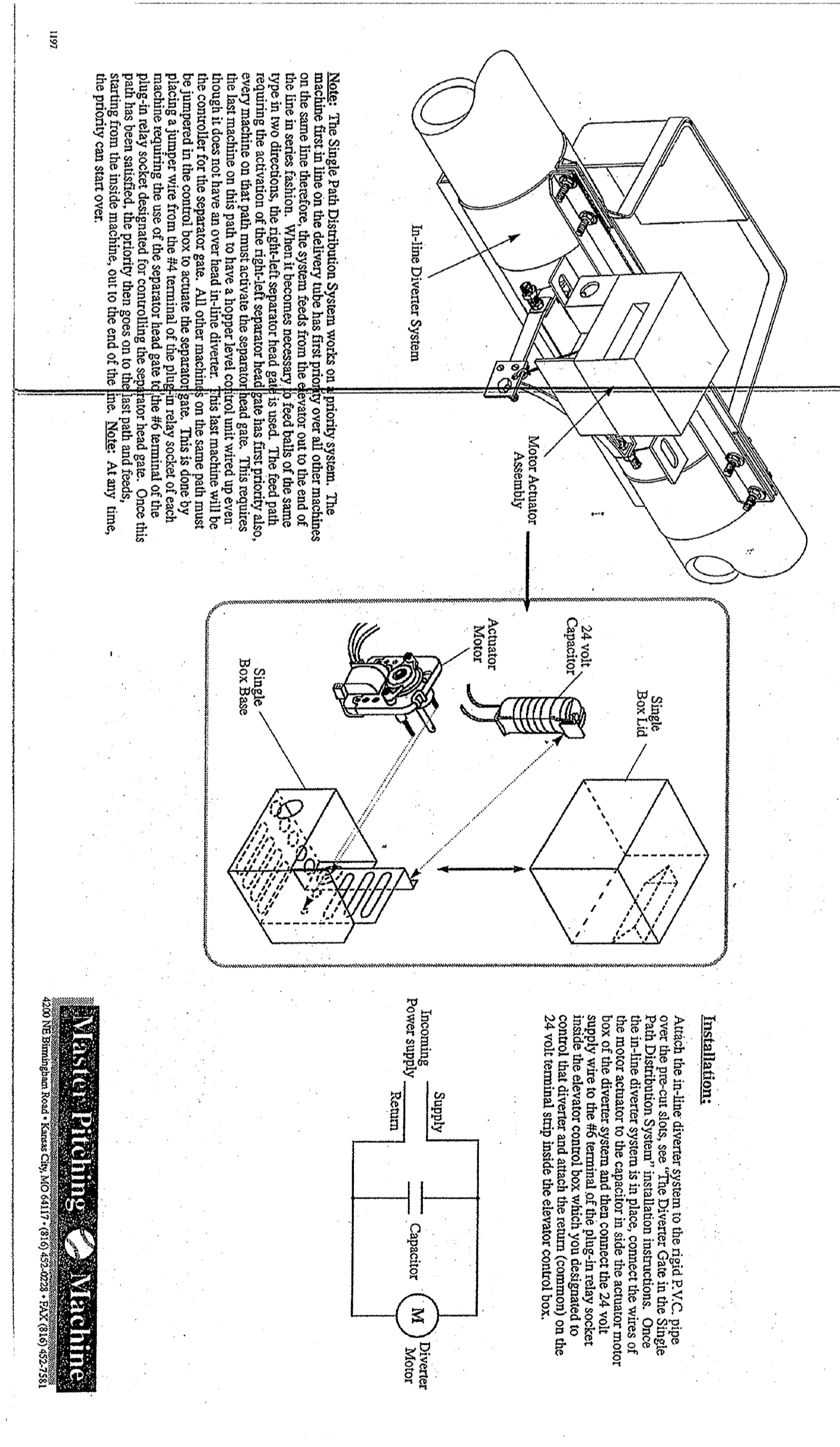
23

Separator Head, Diverter Gate & Flex Tube Adapter Installation



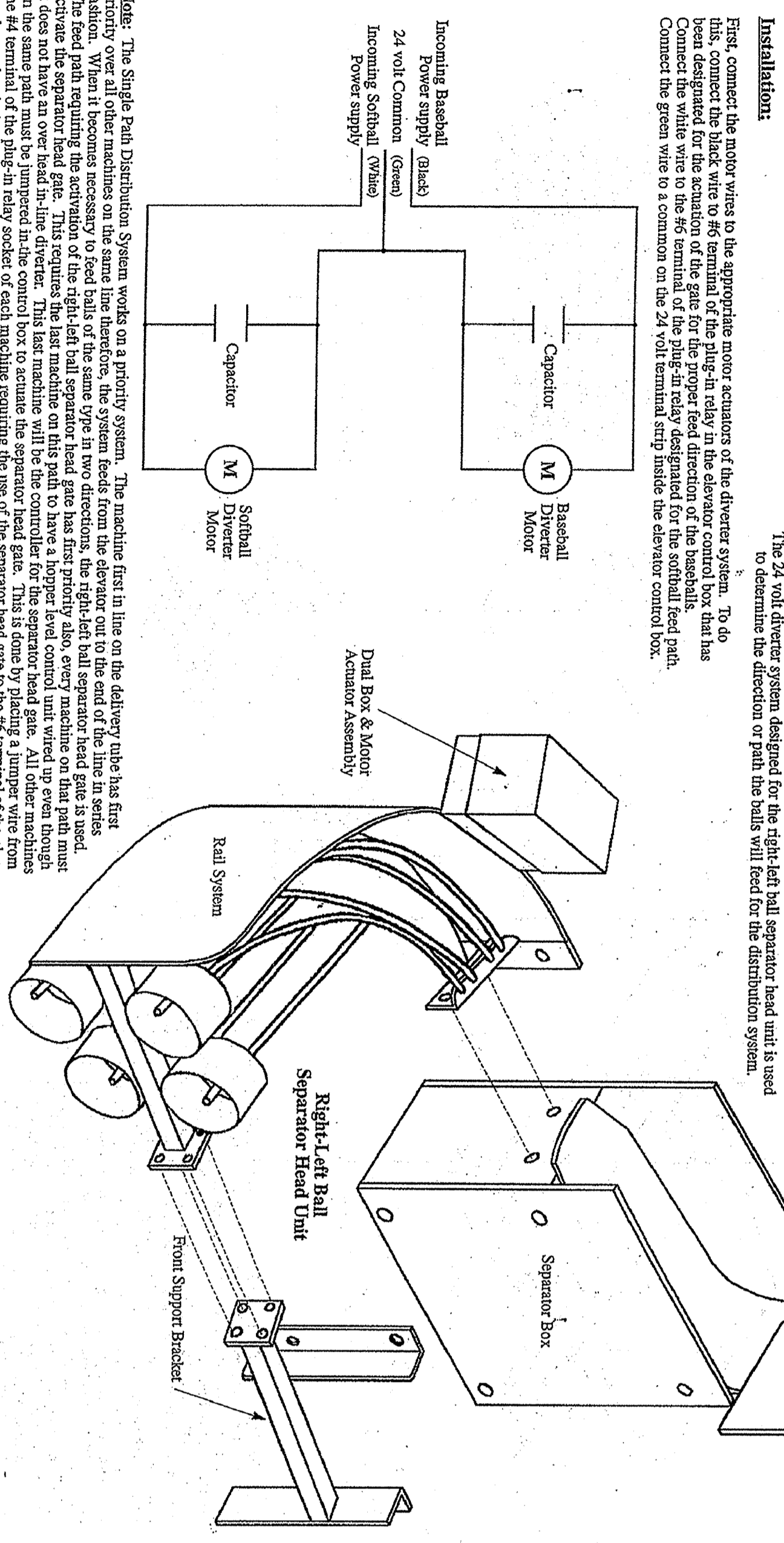
24

24 Volt Diverter Control System for In-Line Diverter



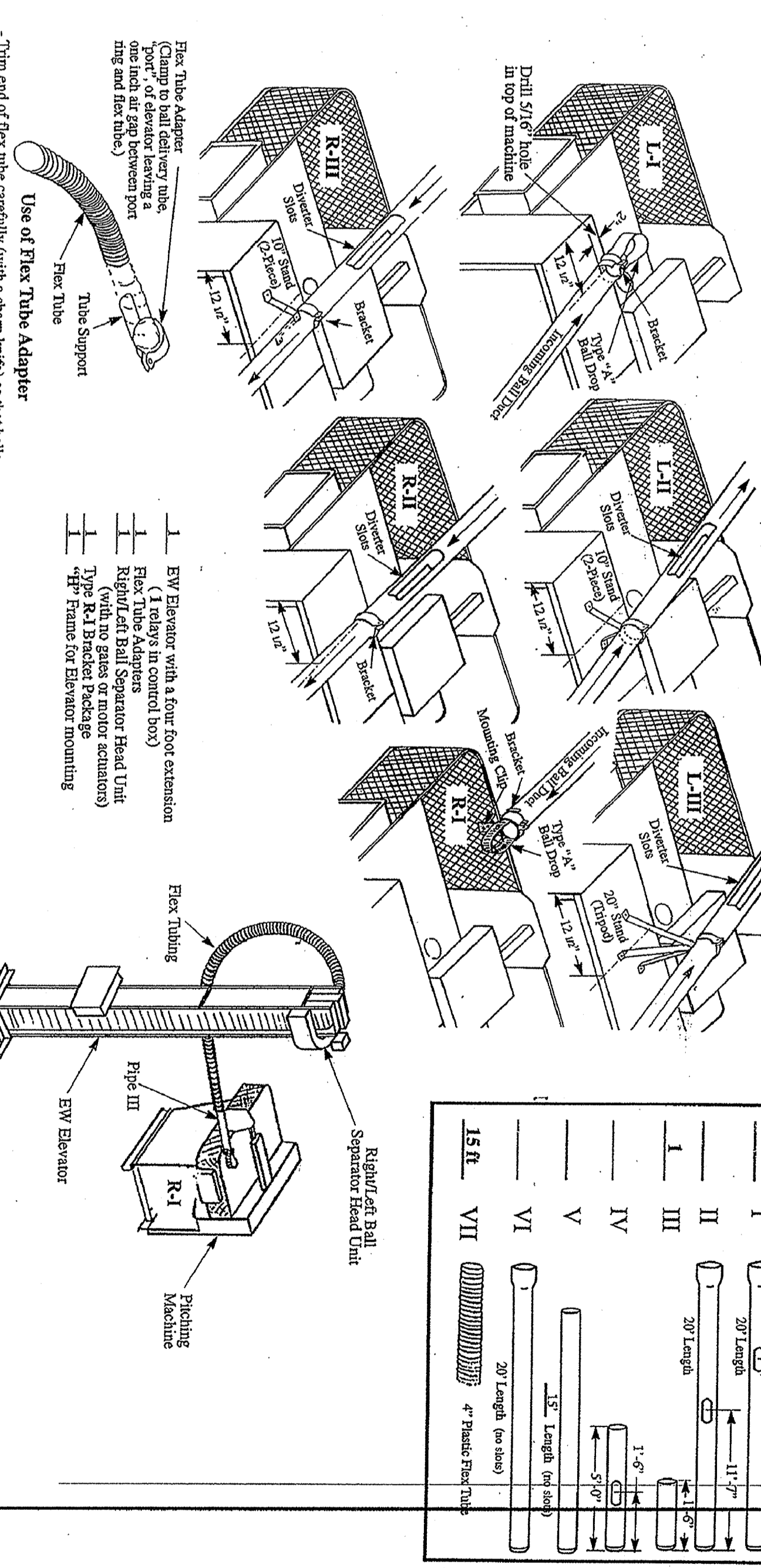
25

24 Volt Diverter Control System for Right-Left Ball Separator Head



26

Typical Single Path Distribution System Details of Individual Stations (Hardware for 5" Plastic Pipe)



27

Master Pitching Machine

Master Pitching Machine

SEP 20 2002

A-8

BATTING CAGE SPECIFICATIONS AND DETAILS

DANIELS FIELD SKATE PARK & SPORTS CENTER DESIGN FOR:
THE CITY OF LOS ANGELES DEPARTMENT OF RECREATION AND PARKS
BOYS & GIRLS CLUB OF SAN PEDRO
 MIKE LANSING, EXECUTIVE DIRECTOR
 1200 S. CABRILLO AVENUE SAN PEDRO, CA 90731
 (310) 833-0807 OFFICE (310) 833-4253 FAX
 SITE: 845 W. 12th STREET, SAN PEDRO, CA 90731

Rodin Associates
 Jerry C. Rodin, Architect, A.I.A.

29000 S. WESTERN AVENUE, SUITE 408
 RANCHO PALOS VERDES, CA 90275
 OFFICE: (310) 832-3135
 FAX: (310) 832-0333
 E-MAIL: jrodin@sbcglobal.net

REVISIONS				REVISIONS			
NO.	DATE	ITEM	BY	NO.	DATE	ITEM	BY
1	1-21-04	LAST DISTRIBUTION CITY LAMP REVIEW	JCR	1	04-20-05	PARK REVISIONS	JCR
2	4-01-05	REC # PLANS	JCR	2	04-20-05	PARK REVISIONS	JCR
3	07-01-05	BID # PLANS CHECK	JCR	3			JCR
4	07-26-05	REC # PLANS REVISION	JCR	4			JCR

JERRY C. RODIN, ARCHITECT, A.I.A. EMPLOYER'S RESPONSIBILITY TO PROVIDE A SAFE WORKING ENVIRONMENT FOR ALL EMPLOYEES AND TO BE RESPONSIBLE FOR THE SAFETY OF ALL EMPLOYEES AND THE PUBLIC IS THE PRIMARY RESPONSIBILITY OF THE EMPLOYER. THE CITY OF LOS ANGELES DEPARTMENT OF RECREATION AND PARKS IS THE EMPLOYER OF THE CITY OF LOS ANGELES DEPARTMENT OF RECREATION AND PARKS. THE CITY OF LOS ANGELES DEPARTMENT OF RECREATION AND PARKS IS NOT RESPONSIBLE FOR THE SAFETY OF ANY EMPLOYEES OR THE PUBLIC. THE CITY OF LOS ANGELES DEPARTMENT OF RECREATION AND PARKS IS NOT RESPONSIBLE FOR THE SAFETY OF ANY EMPLOYEES OR THE PUBLIC. THE CITY OF LOS ANGELES DEPARTMENT OF RECREATION AND PARKS IS NOT RESPONSIBLE FOR THE SAFETY OF ANY EMPLOYEES OR THE PUBLIC.